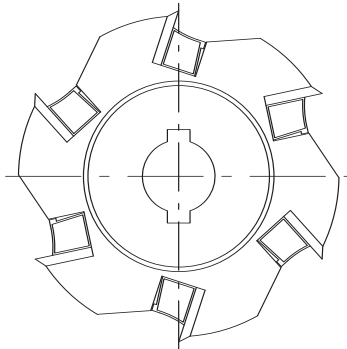


# 2280

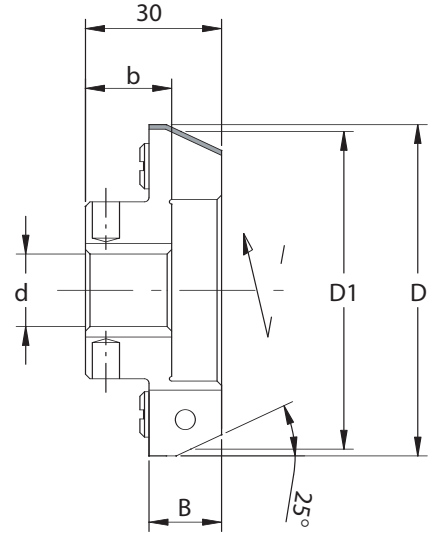
## TESTE PORTA COLTELLI PER BORDATRICI "BIESSE" CUTTERHEADS FOR BIESSE EDGE BANDING MACHINES



**HW** **Z=6** **MEC** Avanzamento meccanico  
Mechanical feed



← DX/RH



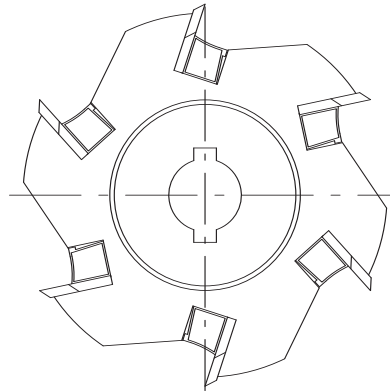
Codice Code	D D	D1 D1	B B	b b	d d	DKN DKN	Rotazione Rotation	Cod. Prezzo Price Code	RICAMBI/Spare Parts		
									Coltello Knife	Cuneo Wedge	Vite Screw
2280.025.001	73	70	16	19	16	5x2,3	Dx/Rh	H21	8206.016.001	8281.140.000	8285.006.000
2280.025.002	73	70	16	19	16	5x2,3	Sx/Lh	H21	8206.016.002	8281.140.000	8285.006.000

# 2281

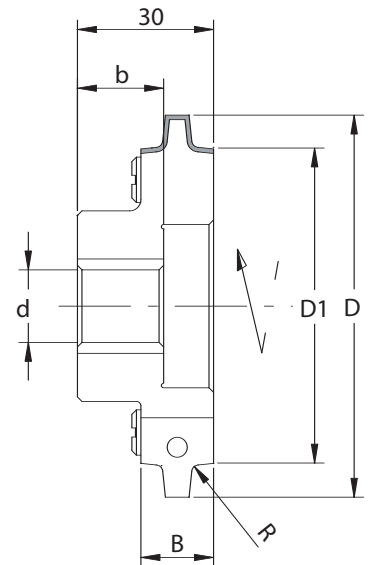
## TESTE PORTA COLTELLI PER BORDATRICI "BIESSE" CUTTERHEADS FOR BIESSE EDGE BANDING MACHINES



**HW** **Z=6** **MEC** Avanzamento meccanico  
Mechanical feed



← DX/RH



Codice Code	R R	D D	D1 D1	B B	b b	d d	DKN DKN	Rotazione Rotation	Cod. Prezzo Price Code	RICAMBI/Spare Parts		
										Coltello Knife	Cuneo Wedge	Vite Screw
2281.010.001	1	84,20	70	16	19	16	5x2,4	Dx/Rh	H21	8205.010.000	8281.140.000	8285.006.000
2281.010.002	1	84,20	70	16	19	16	5x2,4	Sx/Lh	H21	8205.010.000	8281.140.000	8285.006.000
2281.015.001	1,5	84,20	70	16	19	16	5x2,4	Dx/Rh	H21	8205.015.000	8281.140.000	8285.006.000
2281.015.002	1,5	84,20	70	16	19	16	5x2,4	Sx/Lh	H21	8205.015.000	8281.140.000	8285.006.000
2281.020.001	2	84,20	70	16	19	16	5x2,4	Dx/Rh	H21	8205.020.000	8281.140.000	8285.006.000
2281.020.002	2	84,20	70	16	19	16	5x2,4	Sx/Lh	H21	8205.020.000	8281.140.000	8285.006.000
2281.030.001	3	84,20	70	16	19	16	5x2,4	Dx/Rh	H21	8205.030.000	8281.140.000	8285.006.000
2281.030.002	3	84,20	70	16	19	16	5x2,4	Sx/Lh	H21	8205.030.000	8281.140.000	8285.006.000