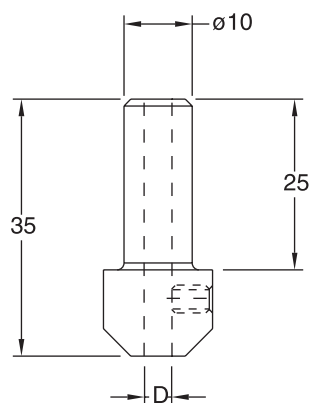


# 7118

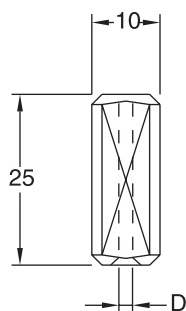
**BUSSOLE E RIDUZIONI PER PUNTE INTEGRALI**  
**BUSHING AND CHUCKS FOR SOLID CARBIDE DRILL BITS**



| <b>Codice</b><br><i>Code</i> | <b>D</b><br><i>D</i> | <b>L</b><br><i>L</i> | <b>Cod. Prezzo</b><br><i>Price Code</i> |
|------------------------------|----------------------|----------------------|---|
| 7118.020.000                 | 2                    | 35                   | F02                                     |
| 7118.025.000                 | 2,5                  | 35                   | F02                                     |
| 7118.030.000                 | 3                    | 35                   | F02                                     |
| 7118.032.000                 | 3,2                  | 35                   | F02                                     |
| 7118.035.000                 | 3,5                  | 35                   | F02                                     |
| 7118.040.000                 | 4                    | 35                   | F02                                     |
| 7118.050.000                 | 5                    | 35                   | F02                                     |

# 7119

**BUSSOLE E RIDUZIONI PER PUNTE INTEGRALI**  
**BUSHING AND CHUCKS FOR SOLID CARBIDE DRILL BITS**



| <b>Codice</b><br><i>Code</i> | <b>D</b><br><i>D</i> | <b>L</b><br><i>L</i> | <b>Cod. Prezzo</b><br><i>Price Code</i> |
|------------------------------|----------------------|----------------------|---|
| 7119.020.000                 | 2                    | 25                   | C02                                     |
| 7119.025.000                 | 2,5                  | 25                   | C02                                     |
| 7119.030.000                 | 3                    | 25                   | C02                                     |
| 7119.032.000                 | 3,2                  | 25                   | C02                                     |
| 7119.035.000                 | 3,5                  | 25                   | C02                                     |
| 7119.040.000                 | 4                    | 25                   | C02                                     |
| 7119.050.000                 | 5                    | 25                   | C02                                     |