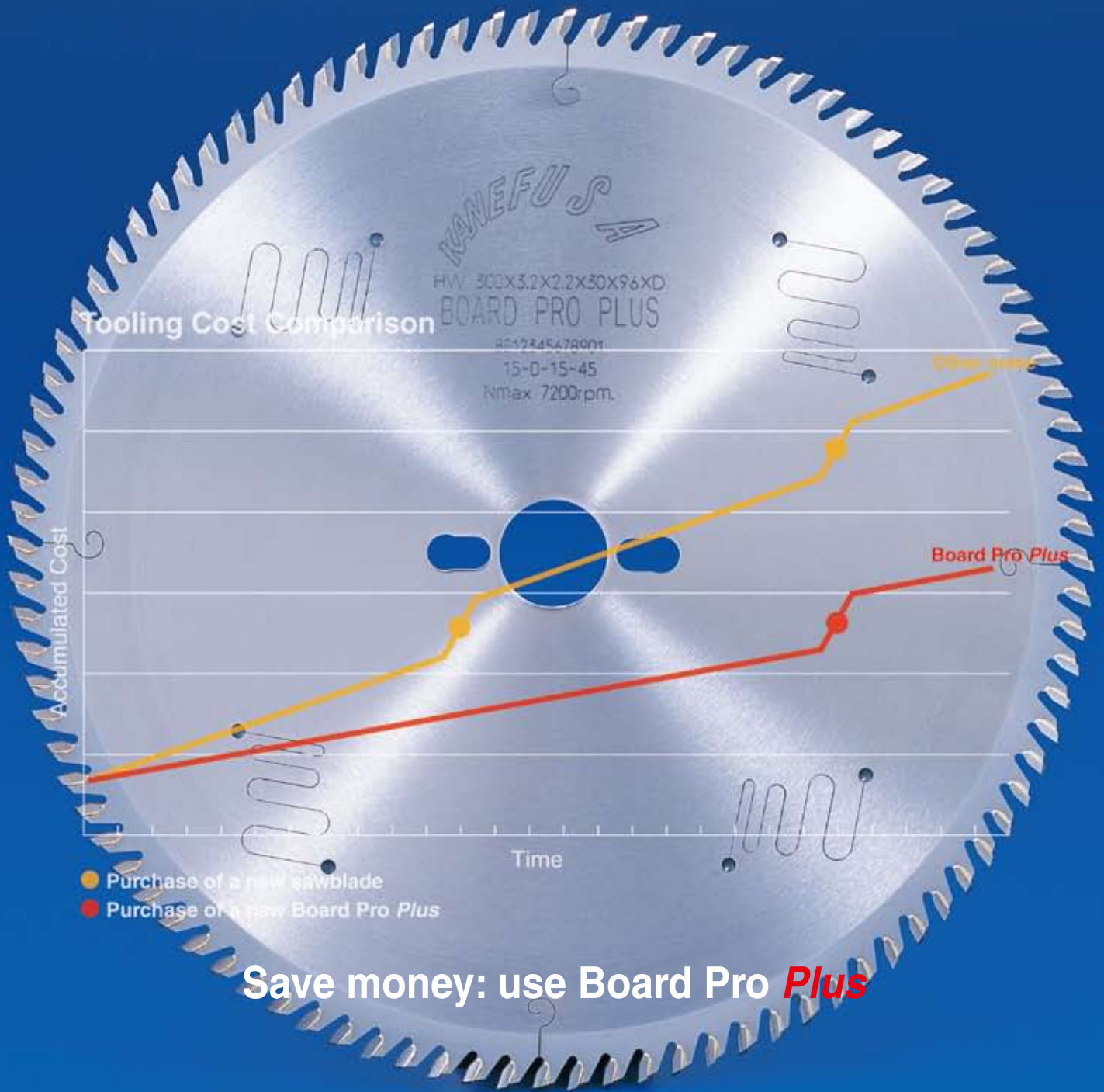


Board Pro *Plus*

KANEFUSA

Table Sawblade



Save money: use Board Pro *Plus*

Kanefusa - A New Dimension of Performance



JQA-QM3710



JQA-EM3137
Head Office
Factory

Specifications and appearance are subject to change without notice.
Photographs and illustrations may vary from actual products.

0-53E-3
[Class] [Article] [Revision]

Board Pro *Plus*

A Table sawblade for cutting particle board and MDF, backed with melamine, HPL and other hard lamination.

Quality Features for More User Value

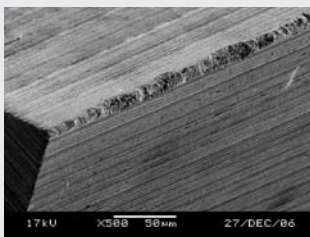
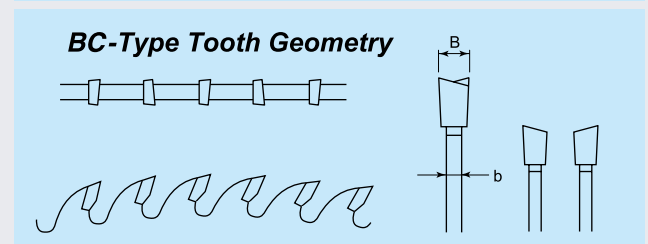
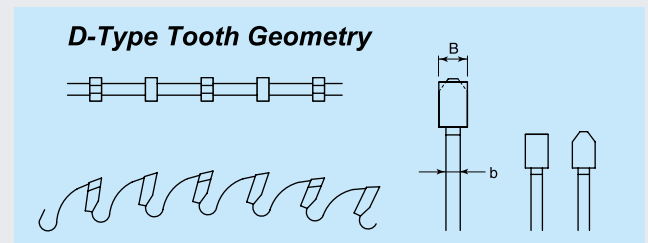
1 Run out in comparison to other brands. Board Pro *Plus* runs very straight

	Run out left side [mm]	Run out right side [mm]	Edge roughness Ra [μm]	Edge roughness Rmax [μm]
Board Pro <i>Plus</i>	0.05	0.04	0.083	0.718
Competitor A (German manufacturer)	0.08	0.08	0.170	1.799
Competitor B (German manufacturer)	0.07	0.08	0.306	4.417
Competitor C (German manufacturer)	0.11	0.11	0.197	2.152

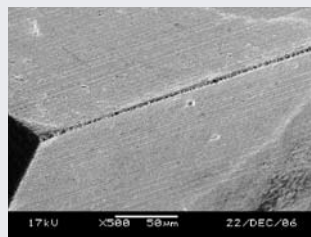
2 Polymer injected laser slots dampen vibrations. Board Pro *Plus* sawblades **cut straighter** and **run quieter** than most other makers.

3 The Board Pro *Plus* sawblade is tipped with a newly developed Tungsten Carbide grade. Field tests in various countries have proved its **superior performance** in comparison to other brands. On average, its life was double of others.

4 Compared with other sawblades, the cutting edge of Board Pro *Plus* is of superior sharpness, leading to **better cut quality** and **longer life**.



Other maker



Kanefusa

Order no.	D	B	b	d	z	Type	Pin holes
691-E605-403	300	3.2	2.2	30	96	D	2/7/42+2/9/46.5+2/10/60
691-F359-403	300	3.2	2.2	25.4	96	D	
659-F704-403	250	3.2	2.2	30	80	BC	
659-F705-403	300	3.2	2.2	30	96	BC	2/7/42+2/9/46.5+2/10/60